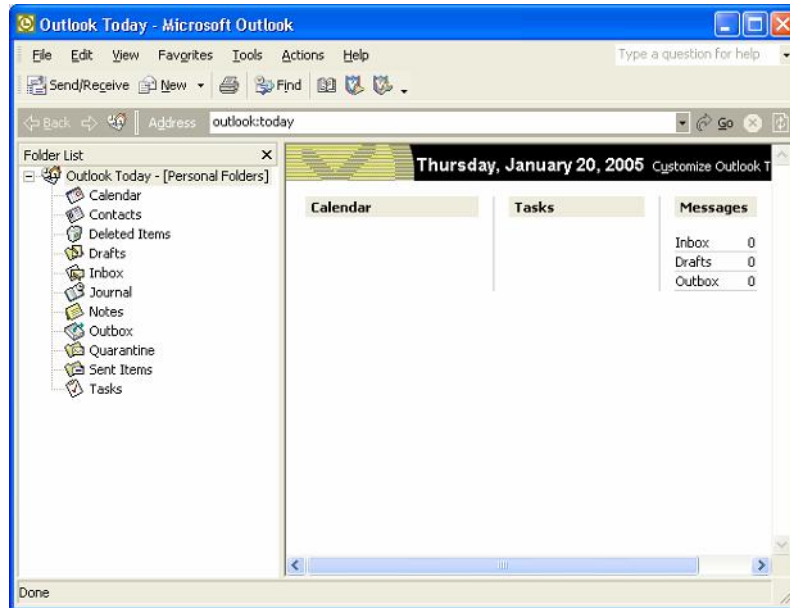
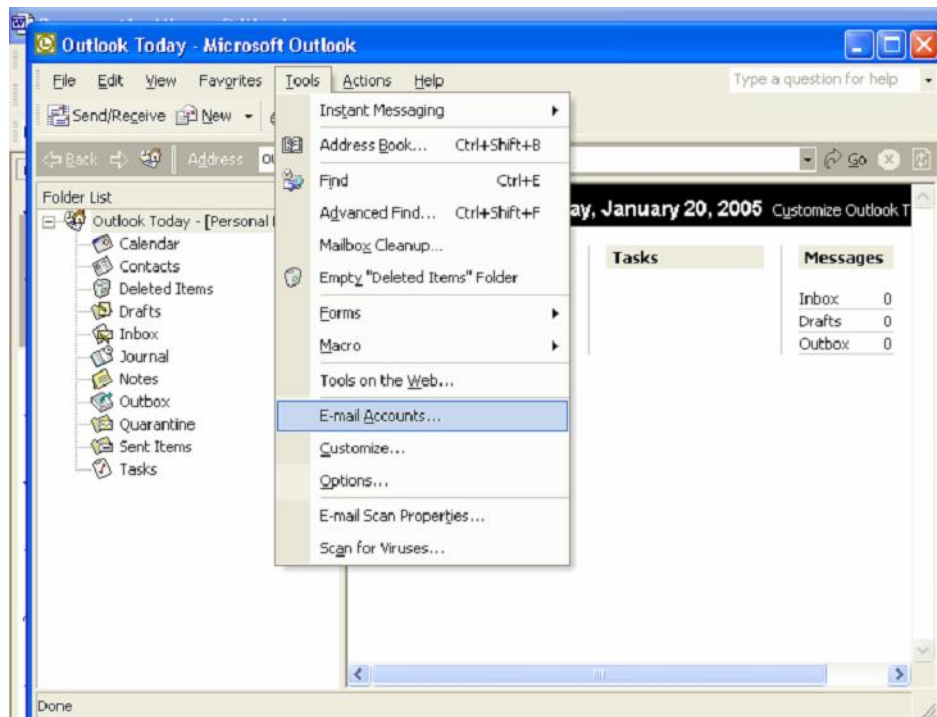


Setup instructions for Microsoft Outlook:

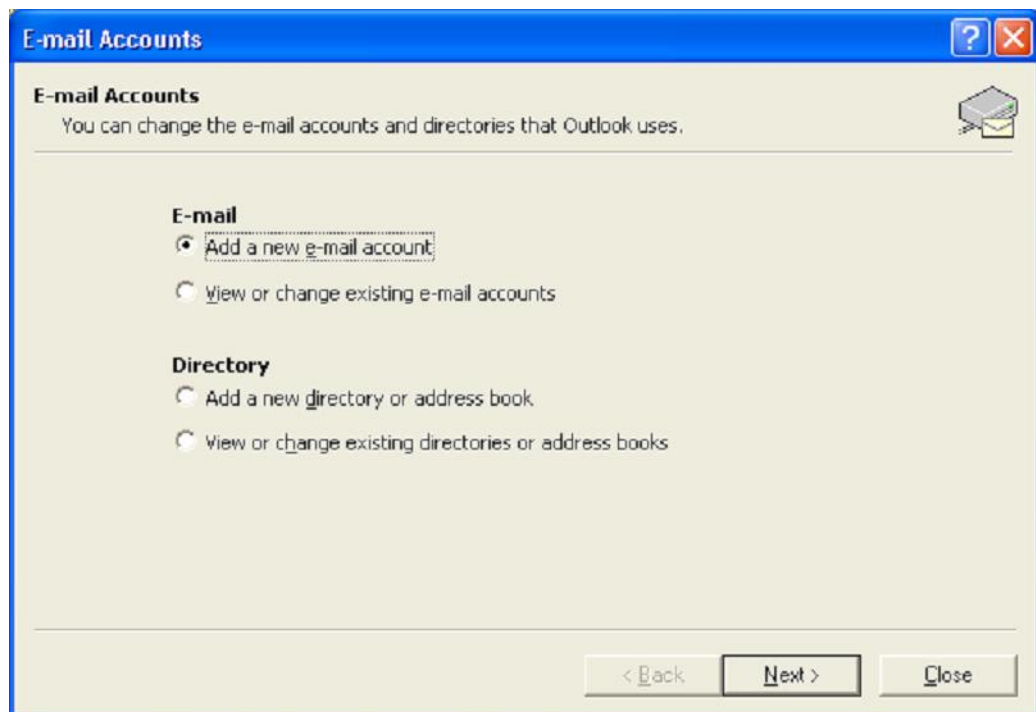
1.) Open Outlook:



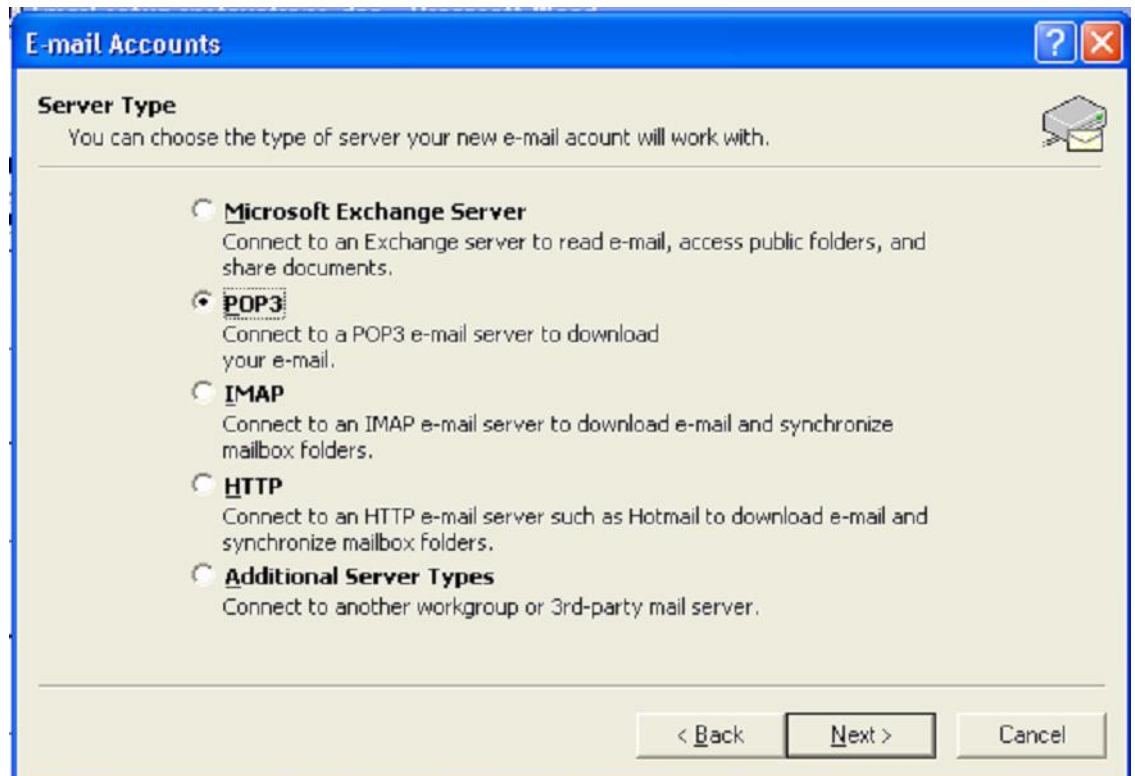
2.) Click on Tools, choose Email Accounts ...



3.) The following screen will appear, choose Add a new e-mail account and Click Next



4.) Choose POP3, Click Next



5.) Fill out the form, substitute "yourname" for your email address. The Incoming and Outgoing mail servers must be "mail.eccwireless.com" and you must use your full email address as the username. Click Next

E-mail Accounts [?] [X]

Internet E-mail Settings (IMAP) [Envelope Icon]

Each of these settings is required to get your e-mail account working.

User Information	Server Information
Your Name: <input type="text" value="Your Name Here"/>	Incoming mail server (IMAP): <input type="text" value="mail.eccwireless.com"/>
E-mail Address: <input type="text" value="yourname@eccwireless.com"/>	Outgoing mail server (SMTP): <input type="text" value="mail.eccwireless.com"/>

Logon Information

User Name:

Password:

Remember password

Log on using Secure Password Authentication (SPA)

6.) Click Finish

E-mail Accounts [?] [X]

Congratulations! [Envelope Icon]

You have successfully entered all the information required to setup your account.

To close the wizard, click Finish.
